



Namibia Business School

Academic Programme

Open your mind

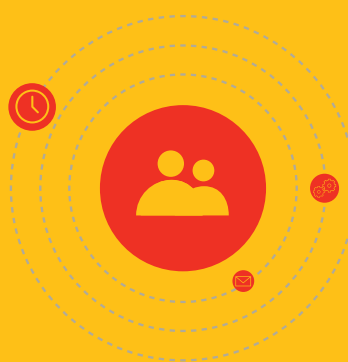
MASTER OF BUSINESS ADMINISTRATION (NATURAL RESOURCES MANAGEMENT)

For more information contact us:
info@nbs.edu.na

Or visit our website:
www.nbs.edu.na

Telephone:
+264 61 413500

Fax:
+264 61 413512



 @NBS_Namibia
 Namibia Business School



NAMIBIA BUSINESS SCHOOL
UNIVERSITY OF NAMIBIA

CRITERIA FOR ADMISSION

- A candidate must have a good relevant Level 8 Bachelor's degree from the University of Namibia, or any other recognized University.
- Alternatively a candidate may present a relevant Post-Graduate Diploma OR an Honours degree from a recognized institution of higher learning.
- A candidate without a relevant Level 8 qualification will be admitted to the School's Post-Graduate Diploma in Business Administration as preparation for the MBA.
- The level and nature of working experience will be criteria for selection, especially in the face of scarcity of places and in terms of creating a conducive learning environment drawing on real work cases.
- A prospective student maybe interviewed and assessed by the Business School before recommending his/her application to the relevant UNAM structures.

MODE OF DELIVERY

The Master of Business Administration (Management Strategy) will be delivered full-time on a block-release basis augmented through the School's e-learning platform. The minimum duration of the programme is eighteen (18) months.

MODULES IN THE PROGRAMME:

YEAR 1 (SEMESTER 1)

- Academic Writing for Post-Graduate Studies
- Advanced Business Ethics
- Business Research Methods
- Comparative Natural Resources Policies & Laws
- Natural Resources Economics & Finance
- Comparative Environmental Management Practices
- Sustainable Tourism: Markets, Models & Strategies

YEAR 1 (SEMESTER 2)

- Sustainable Energy: Markets, Models & Strategies
- Sustainable Mining: Markets, Models & Strategies
- Sustainable Water: Markets, Models & Strategies
- Sustainable Fisheries: Markets, Models & Strategies
- Sustainable Agriculture: Markets, Models & Strategies
- Sustainable Forestry: Markets, Models & Strategies

SEMESTER THREE (3)

- Business Project in Natural Resources Management

TUITION FEES AND COURSE MATERIAL

See NBS Website (www.nbs.edu.na) –
Tuition Fees: Contact NBS Finance Department for Fee Structure (Course material is made available on the NBS intranet platform only).